

# How to read your meter

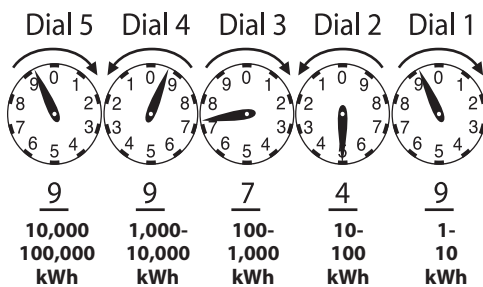
Your electric meter measures how much electricity you use. You can monitor your own usage by reading your meter.

## What is a kilowatt?

A kilowatt is a measure of electricity. You are charged by the kilowatt-hour, or the use of 1,000 watts for one hour. That's the same as using a 100-watt bulb for 10 hours. Of course, different electrical appliances use different amounts of electricity, and that can affect your bill.

## How hard is it to read a meter?

It's very simple. Most meters have four or five dials that look similar to this sample reading:



Just like the odometer in your car, the dial to the far right (Dial 1) turns first, measuring 1 to 10 kilowatt-hours (kWh). When Dial 1 again reaches 0, thus completing one complete revolution, Dial 2 turns over to 1. And when Dial 2 completes a full revolution back to 0, Dial 3 turns over to 1, and so on.

In the sample reading above, it is safe to assume that Dial 5 has not turned to 0 since the meter was last read, meaning the actual reading would be 99749, just as you see it. Therefore, you would subtract the last reading from 99749 to get your usage. However, when Dial 5 turns from 9 to 0, you must add a 1 to the left of this number, just as if there were another dial, like you would when the odometer in your car turns over.

To calculate your usage in a month when your meter has "turned over" (meter starts over at '00000'), you subtract your previous reading, a 5-digit number, from your current reading, a 6-digit number that starts with the 1 you added to the left of Dial 5 (Dial 4 if your meter has only 4 dials). If by chance you have a digital readout, simply jot down the numbers. If you are one of a small group of customers with some other type of meter, call TXU Energy customer service at 1-800-242-9113 for instructions.

## To read your meter, follow these simple steps:

- Stand directly in front of your meter so you can see the dials clearly.
- Look at the sample shown.
  - If the pointer is between two numbers, read the lower number.
  - If the pointer seems to be on a number, look at the dial just to its right to make sure it has passed 0. If it hasn't, mark down the lower number. For example, look at Dial 2. Notice that it looks like it's on 5. But Dial 1 is still on 9. That means Dial 2 should be read as 4.
- Note your numbers. In our sample, the reading is 99749. Let's say you wrote down last month's numbers and they were 89352. Simply subtract last month's reading from this month's reading:

This month:	99749
Last month:	<u>89352</u>
Kilowatts used:	10397

You will be billed for 10,397 kilowatt hours. This is just an example to illustrate how to read your dial. It does not indicate how much electricity is used in a typical home.

## Why would I read my meter?

When you start taking steps to conserve electricity, you can see how well you are doing by monitoring your meter. See TXU Energy's *Money-Saving Conservation Tips* handout for simple ways to save.

## Are meters accurate?

Electric meters are precision instruments that are proven to give reliable readings. The accuracy of meters is tested against the National Bureau of Standards.

## Is my meter always read accurately?

Meter readers are trained to take accurate readings, even from a distance using a special instrument, much like binoculars. You can help by keeping plants and obstructions away from the meter and restraining dogs. If you believe your meter has been read incorrectly, please call customer service at **1-800-242-9113**.