

# Outdoor Tips

## ATTIC

Leaks develop in air ducts over time. Sealing these leaks can reduce cooling costs.

Open the upper vents in your attic to let warm air out, and make sure any lower (soffit) vents are not blocked.

Make sure that your walls and attic are properly insulated. Adding insulation in your attic is one of the most cost-effective savings measures, and one that you can do yourself.

A single, thin coat of Radiant Barrier Spray applied to the underside of your roof will block most of the sun's radiant heat from entering your home. And in the winter, that same barrier will reflect back most of the heat that tries to escape from your home.

## WEATHERSTRIPPING/CAULKING

Weatherstrip and caulk around windows and doors to prevent drafts.

## KEEP DOORS CLOSED

Shut the door or at least try to minimize the number of times that doors to the outside are opened and closed. Each time you open the door warm air enters the house.

## AIR CONDITIONER

Have your cooling system serviced annually by a licensed contractor; remember to replace internal air filters regularly and regularly clean the fins on the outside unit with a soft brush to remove accumulated dirt.

The age and condition of your cooling unit may cause it to become less efficient. If it is more than 12 years old consider replacing it with newer, more efficient equipment.

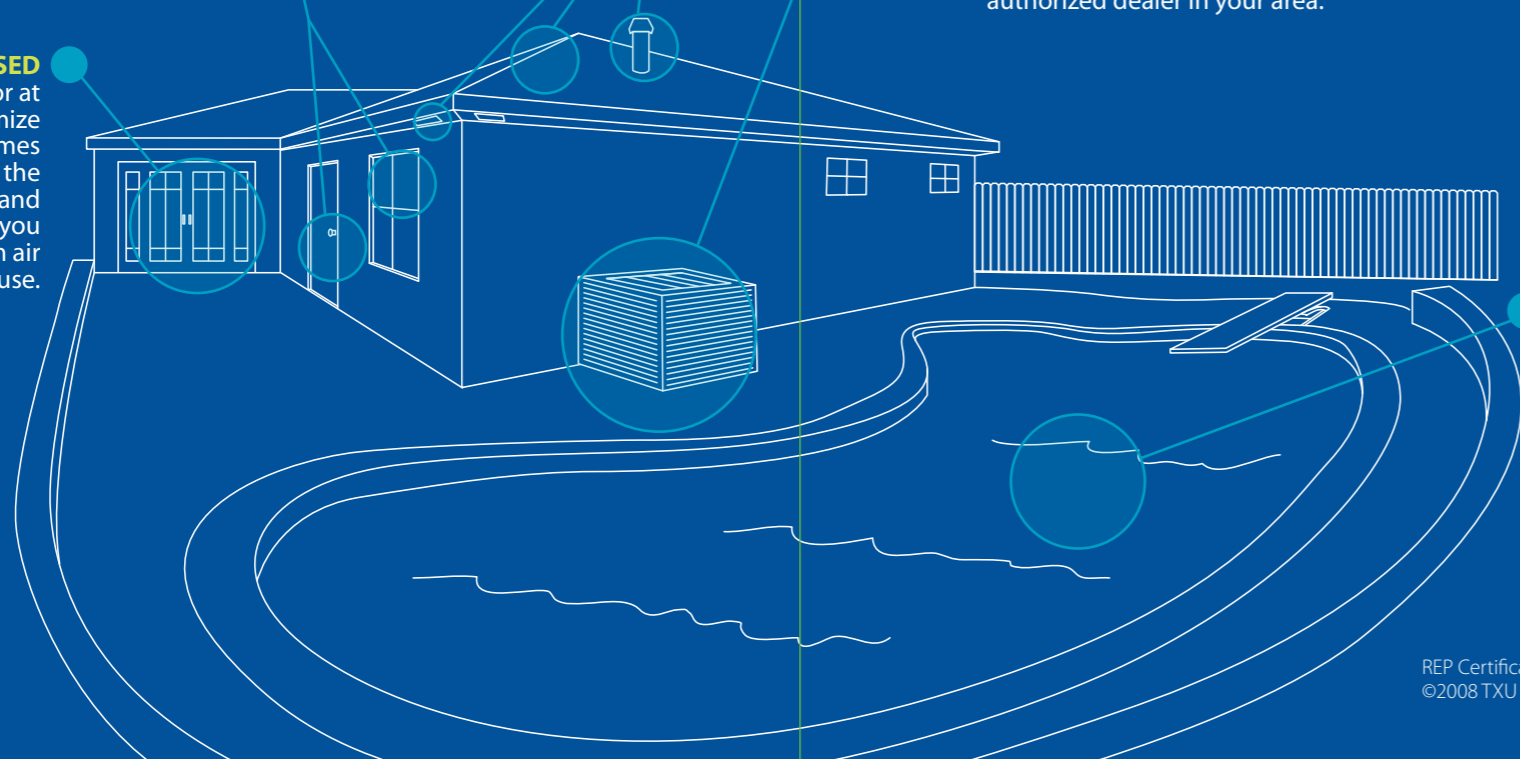
Air conditioning units with a higher SEER (Seasonal Energy Efficiency Ratio) will save you money over the life of the unit. We recommend a SEER of 14.0 or higher.

If a room air conditioner has a fresh air intake, or exhaust vent, keep the vent closed when not in use.

Check [www.txu.com/dealernet](http://www.txu.com/dealernet) for a TXU Energy authorized dealer in your area.

## POOLS

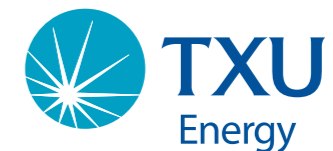
If possible, avoid running the pool pump constantly—8 hours a day should be sufficient. An automatic timer on your pool pump makes this convenient and helps to keep the costs down.



REP Certificate No. 10004  
©2008 TXU Energy. All rights reserved.

# TXU Energy Savings Guide

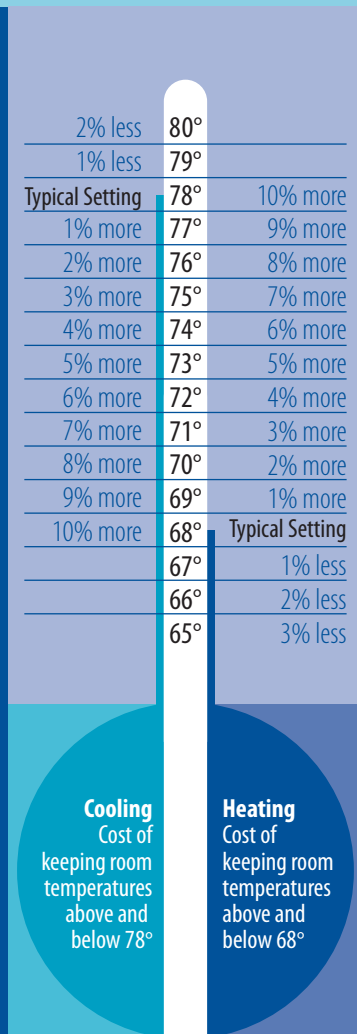
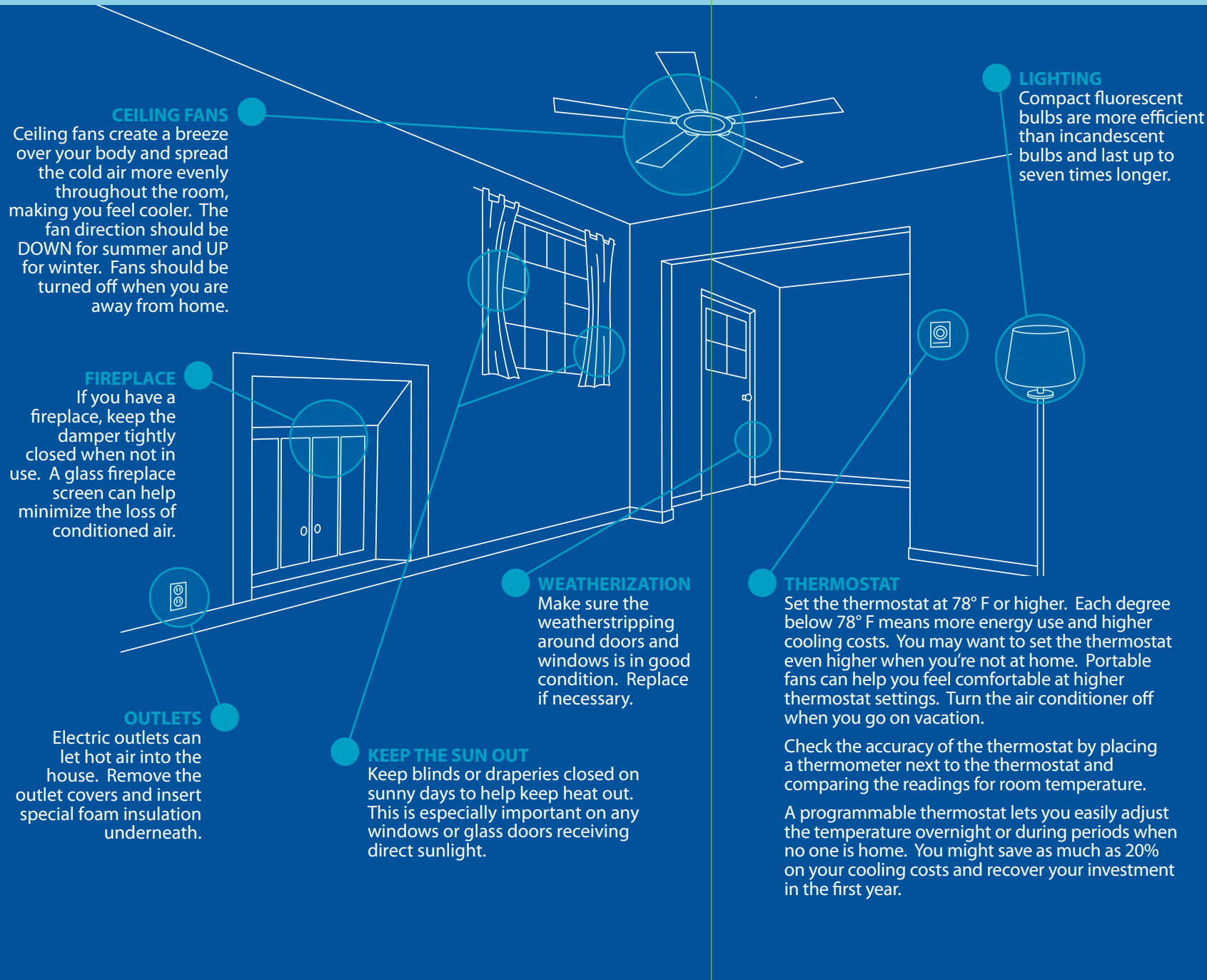
Everything's Coming Up Savings for the Inside and Outside of Your Home!



# Indoor Tips

# More Helpful Info

And Other Ways to Control Your Electricity Usage and Costs



\* Interactive Thermostat and information shown is for illustrative purposes only. Potential energy savings are based on an average temperature setback period of 8 hours and may vary depending on your personal lifestyle, system settings, equipment maintenance, local climate, actual construction, and installation and type of equipment and duct systems.

## Frequently Asked Bill Questions

**How is my electric bill calculated?**  
Your electric bill is calculated based on the amount of energy (expressed in kilowatt-hours or kWh) used in your billing cycle multiplied by the cost of energy plus any applicable customer charges, taxes and other line items identified on your bill.

**What drives energy usage?**  
Electric heating and air conditioning equipment are usually the single biggest components impacting energy use. The more these systems operate, the more energy they consume. Higher outside temperatures and/or humidity in the summer can significantly increase how long your air conditioner runs, and thus your electric costs.

**What drives the changes to my bill amount from month to month?**  
Electricity usage usually has the largest impact on your bill amount. Other items that may drive a change are:

- a balance brought forward from a previous month
- the first bill affected by a standard seasonal change in a price component
- a bill based on more billing days than the usual number of 28-32 days
- an additional service charge shown on the bill
- a balance transferred from another address
- a deposit request shown on the bill
- an additional charge from a Deferred Payment Agreement

For more information, please visit [www.txu.com/billquestions](http://www.txu.com/billquestions)

## Home Energy Advisor

TXU Energy Home Energy Advisor<sup>SM</sup> is our free, easy-to-use online service that analyzes your specific home and energy usage. Within minutes of signing up, you'll receive a step-by-step energy plan with personalized recommendations that can begin saving you money on your monthly electric bill.

For more information, please visit [www.txu.com/hea](http://www.txu.com/hea)

## Authorized Dealer Network

The TXU Energy Authorized Dealer Network<sup>SM</sup> helps you locate dependable, high-quality dealers that service, sell and install air conditioning & heating equipment, insulation and energy-efficient windows.

For more information, please visit [www.txu.com/dealernetwork](http://www.txu.com/dealernetwork)

## Average Billing

Eliminate the guesswork and make household budgeting easier. With TXU Energy Average Billing, you take control of your electric bill and smooth out seasonal highs and lows.

For more information, please visit [www.txu.com/averagebilling](http://www.txu.com/averagebilling)

